



T R U M P

---

O C E A N C L U B

---

I N T E R N A T I O N A L H O T E L & T O W E R

---

P A N A M A



“I am pleased to introduce the Ocean Club, an exciting and prestigious property located in Punta Pacifica, the most distinguished and renowned residential sector in the city of Panama. I am honored to develop this extraordinary high rise with my partner, Roger Khafif of the K Group. We are proud that our creation has already become a landmark in Central America and the Caribbean.”

Sincerely,  
Donald J. Trump

A handwritten signature in black ink, which appears to be "Donald Trump".





## Trump Ocean Club P

- Condo-hotel
- 1, 2 & 3 Bedroom Condominiums
- Bay lofts
  - Exquisitely Furnished



TRUMP



Artist Conceptual Rendering

## Amenities

- High-end Boutiques
- Wellness Spa
- 3 Private Lobbies
- 24 hour Concierge
- Gourmet Restaurants
- Parking Garage
- 13th Floor- Infinity Pool
- 4 Pools on Pier area
- Room service
- Restuarants





## Trump Standard Features

- Marble Floors Inside and Outside
- Stainless Steel Appliances
- European Cabinetry
- Granite Counter Tops
- Frameless Showers
- Central A/C
- Designated Parking Spaces





## Club at Contadora Island

- Restaurants
- Infinity pool
- Water sports & activities
- Exclusive transportation from Ocean Club to the beach club





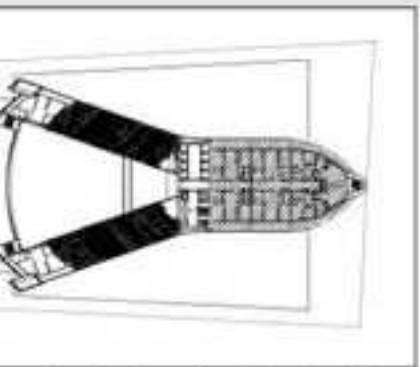
Conceptual Rendering

# Floor Plans

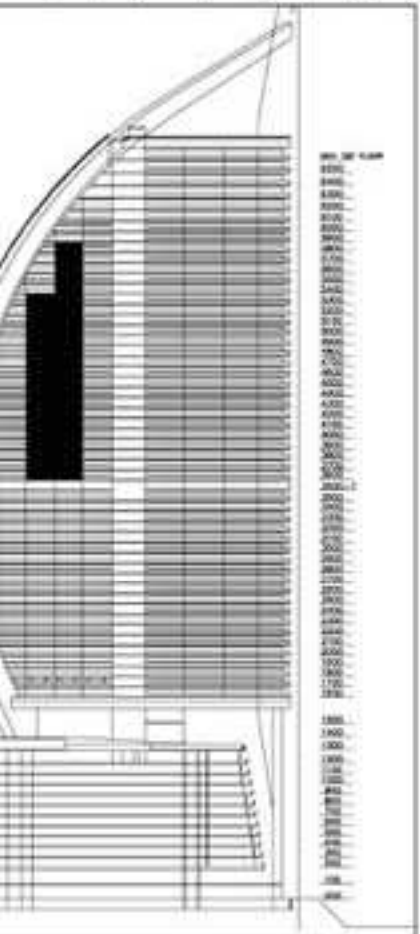


T R U

# 1 BED ROOM - 1.5 BATH

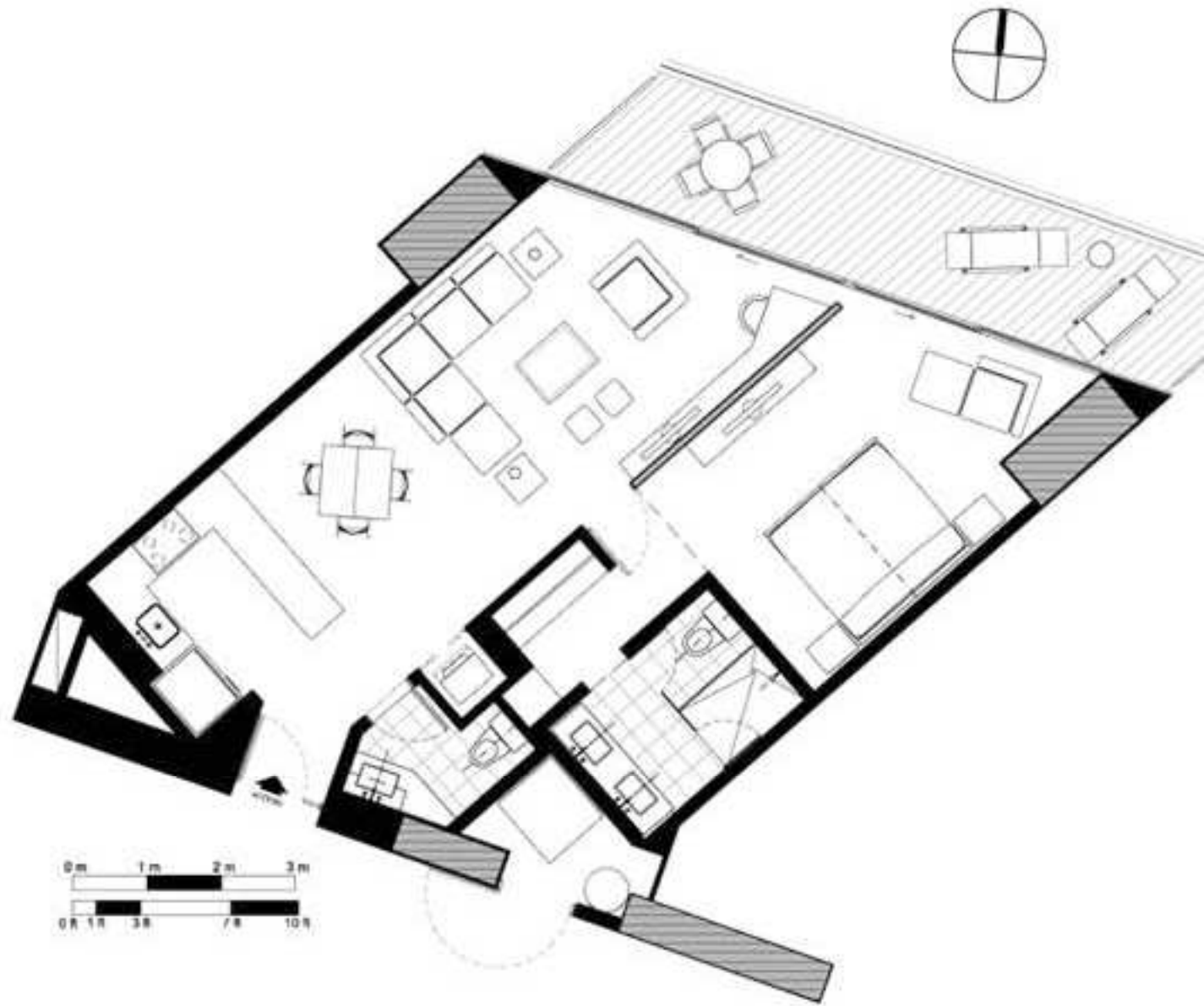


L I Z A C I O N



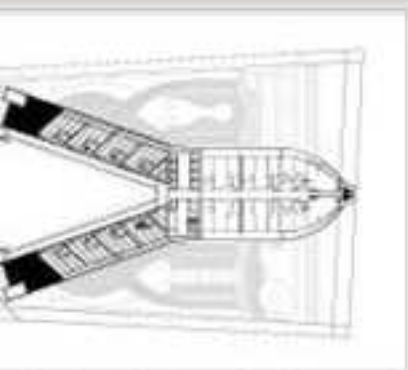
I Z A C I O N C O R T E

CEAN CLUB



ESQUEMA PRELIMINAR

# Corner layout



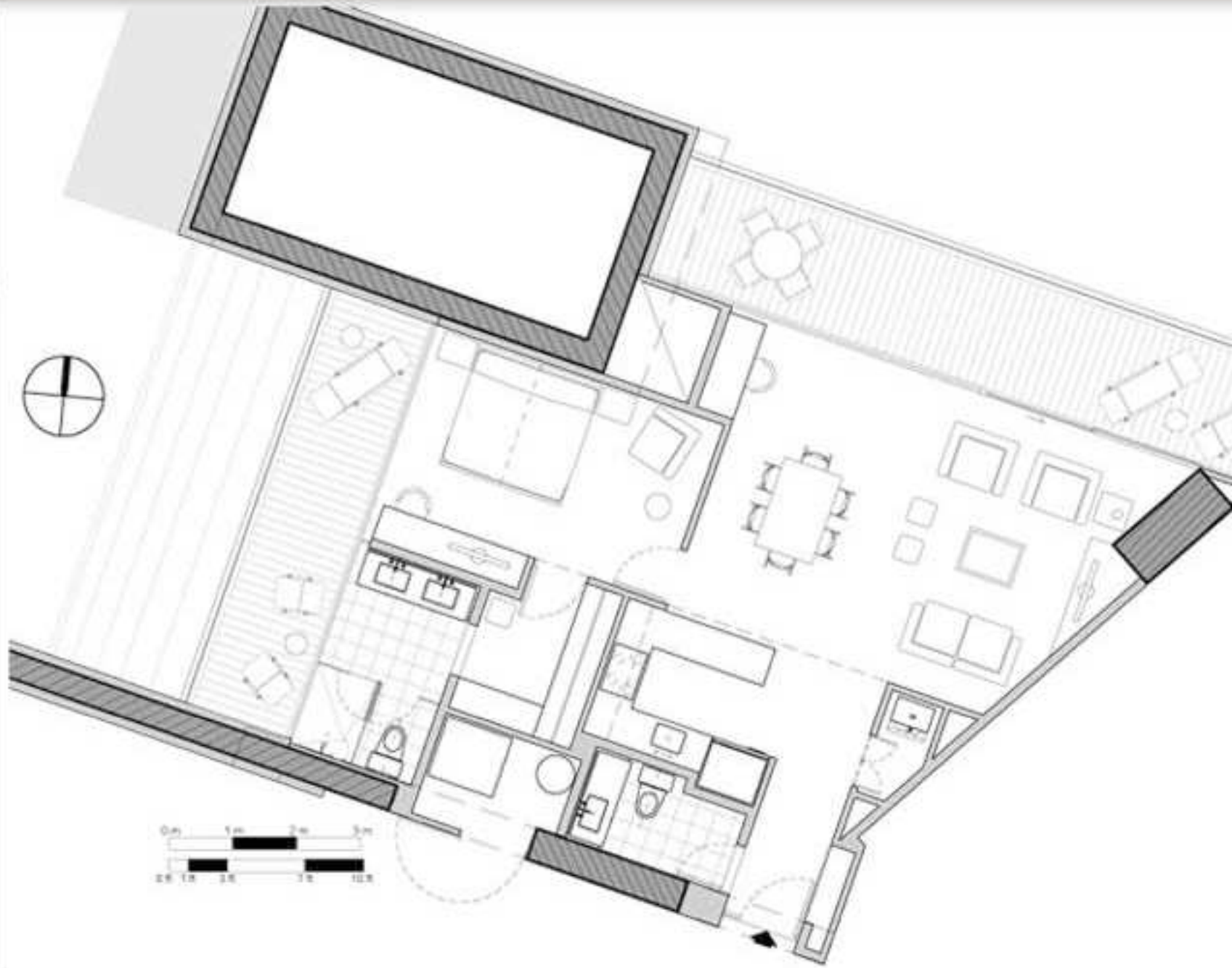
L I Z A C I O N



ORGANIZACION CORTE

ORGANIZACION CORTE

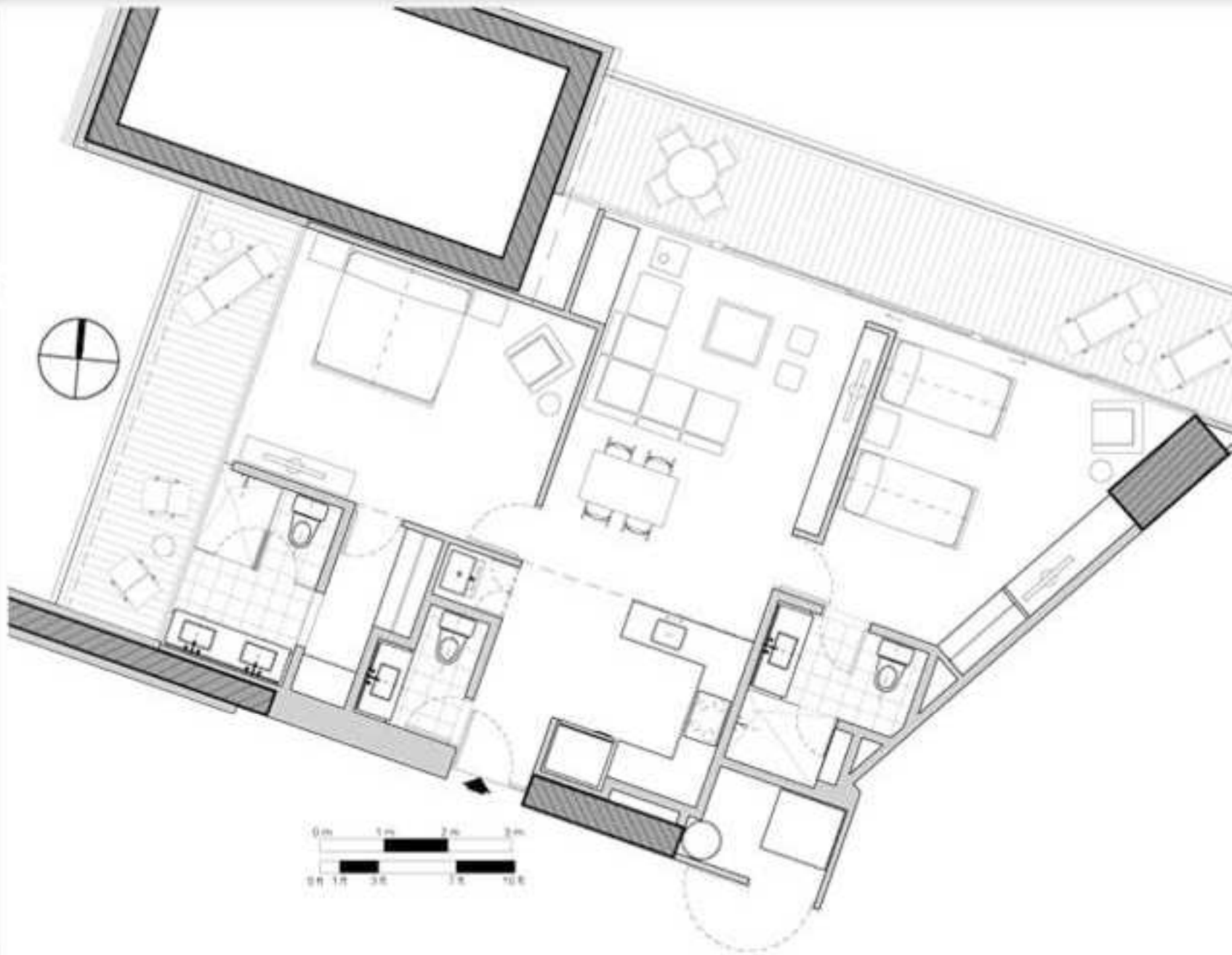
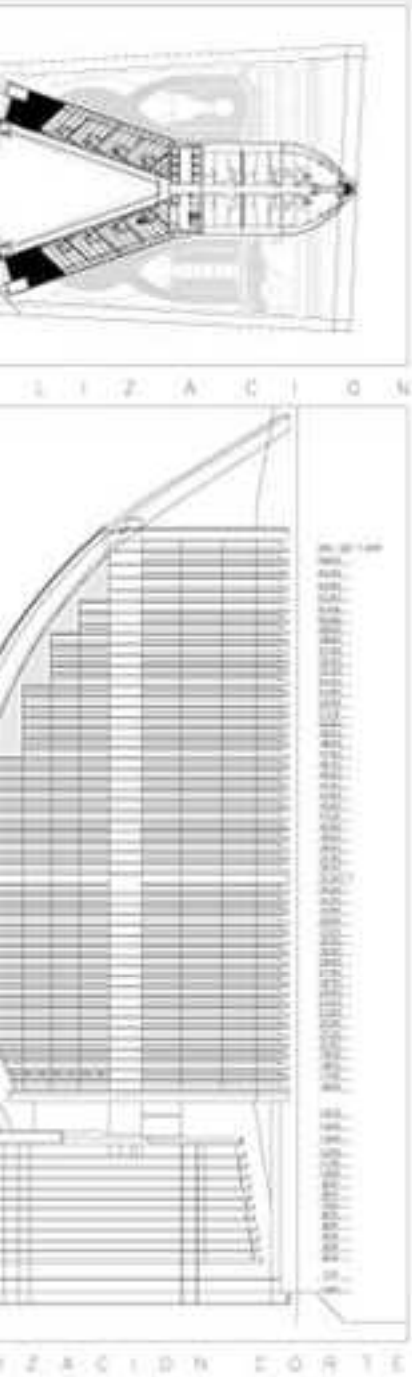
OCEAN CLUB



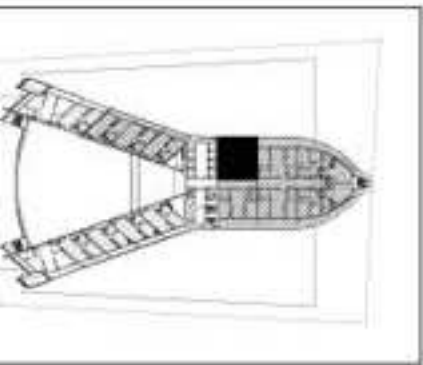
ESQUEMA PRELIMINAR



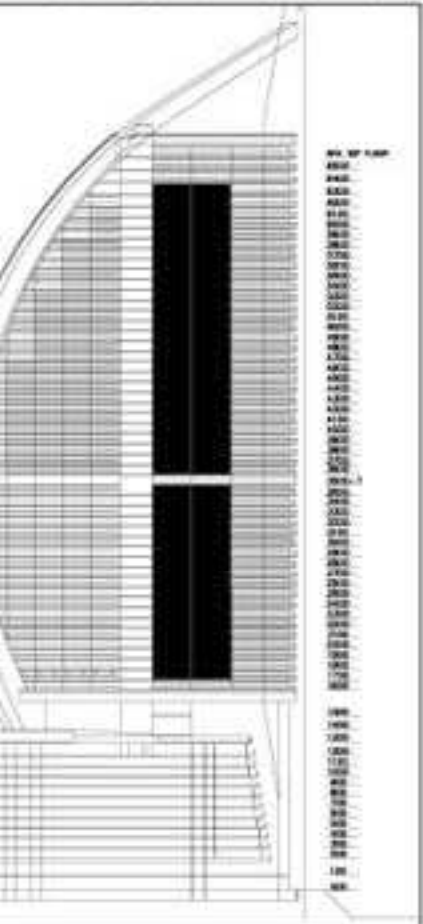
# Corner layout



# 2 BED ROOM - 2.5 BATH



ALIZACION



IZACION CORTE

OCEAN CLUB

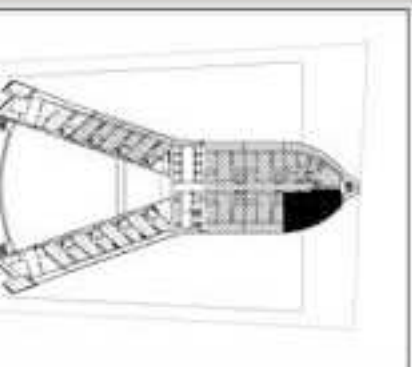


ESQUEMA PRELIMINAR

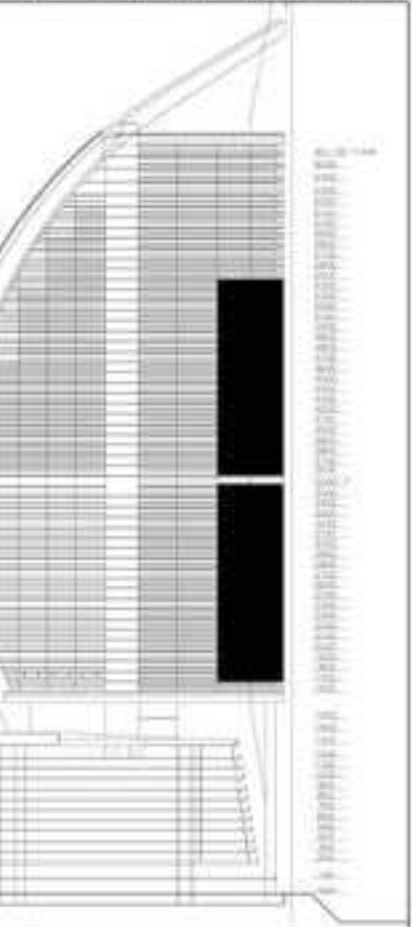




# 3 BED ROOM - 2.5 BATH

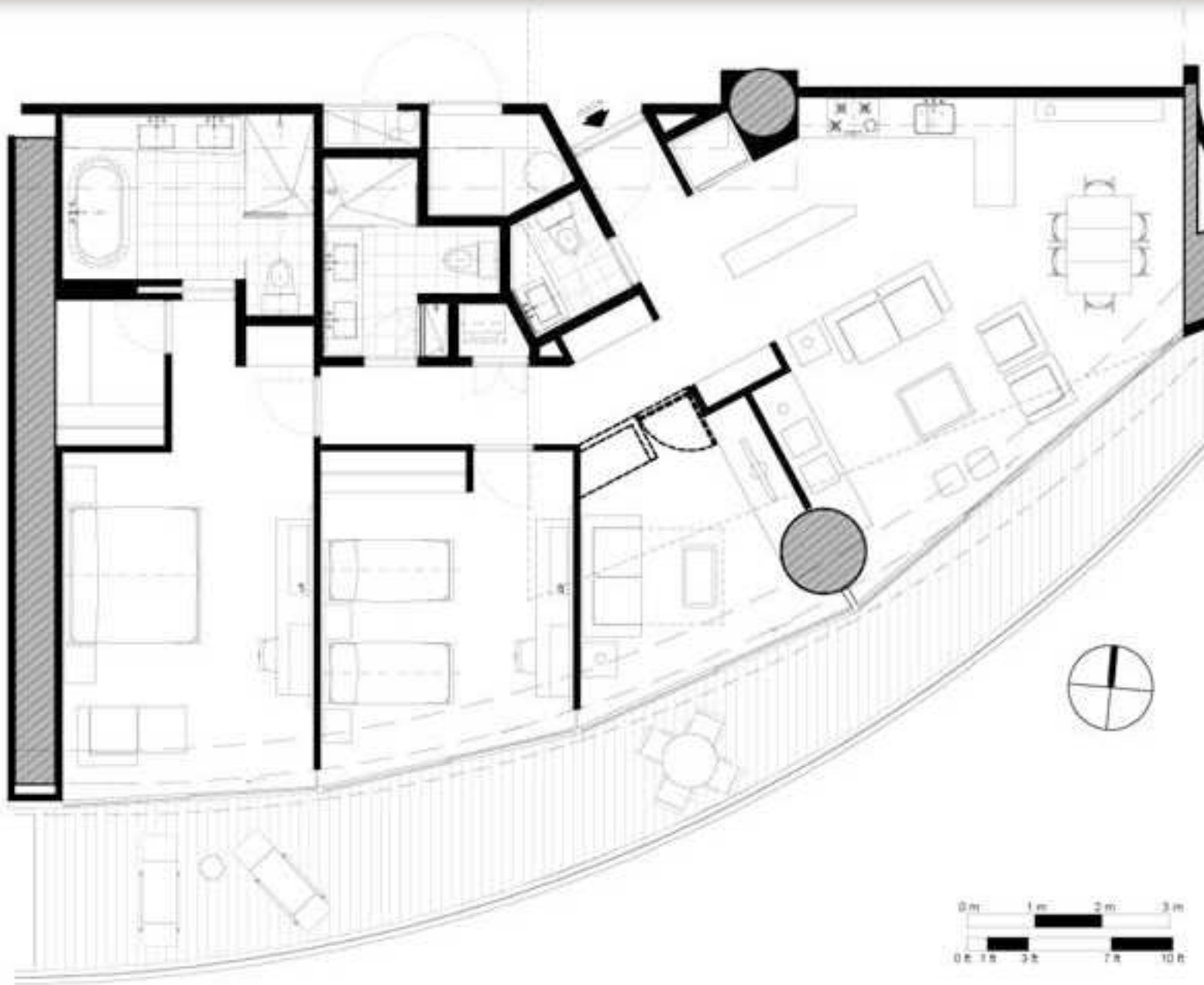


L I Z A C I O N



L I Z A C I O N C O R T E

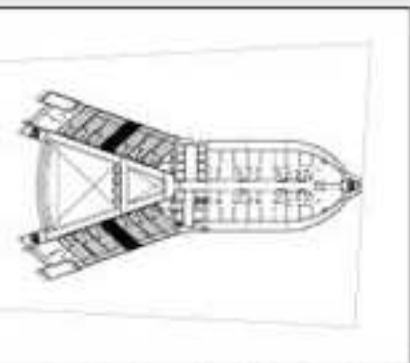
OCEAN CLUB



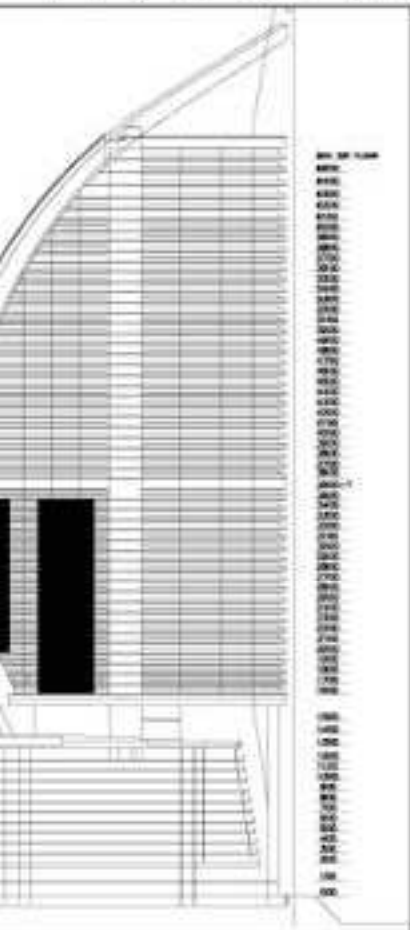
ESQUEMA PRELIMINAR



# Condo Hotel Studio



L I Z A C I O N



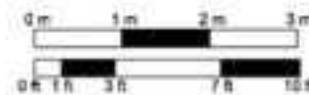
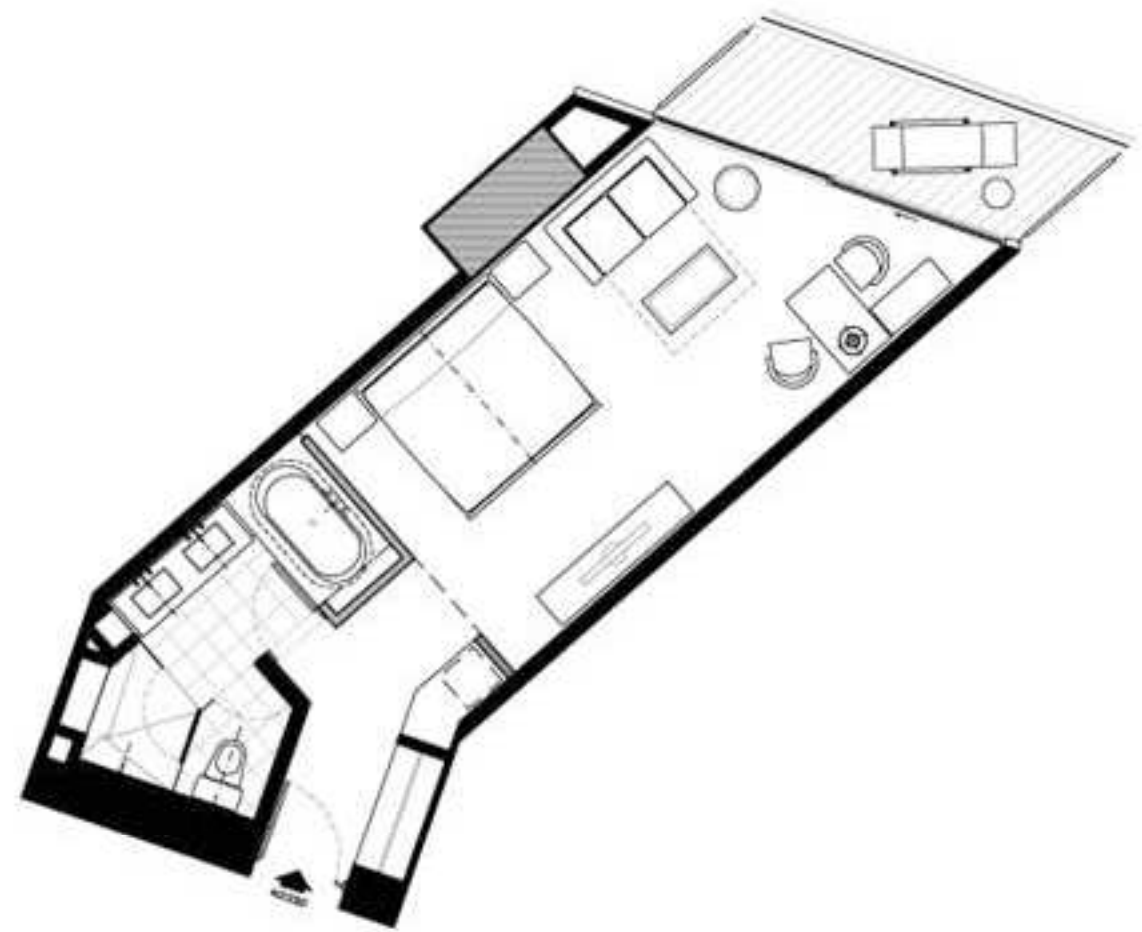
0.00

0.05  
0.10  
0.15  
0.20  
0.25  
0.30  
0.35  
0.40  
0.45  
0.50  
0.55  
0.60  
0.65  
0.70  
0.75  
0.80  
0.85  
0.90  
0.95  
1.00  
1.05  
1.10  
1.15  
1.20  
1.25  
1.30  
1.35  
1.40  
1.45  
1.50  
1.55  
1.60  
1.65  
1.70  
1.75  
1.80  
1.85  
1.90  
1.95  
2.00

2.00  
2.05  
2.10  
2.15  
2.20  
2.25  
2.30  
2.35  
2.40  
2.45  
2.50  
2.55  
2.60  
2.65  
2.70  
2.75  
2.80  
2.85  
2.90  
2.95  
3.00

I Z A C I O N C O R T E

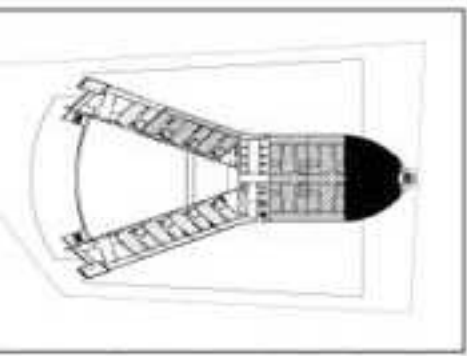
CEAN CLUB



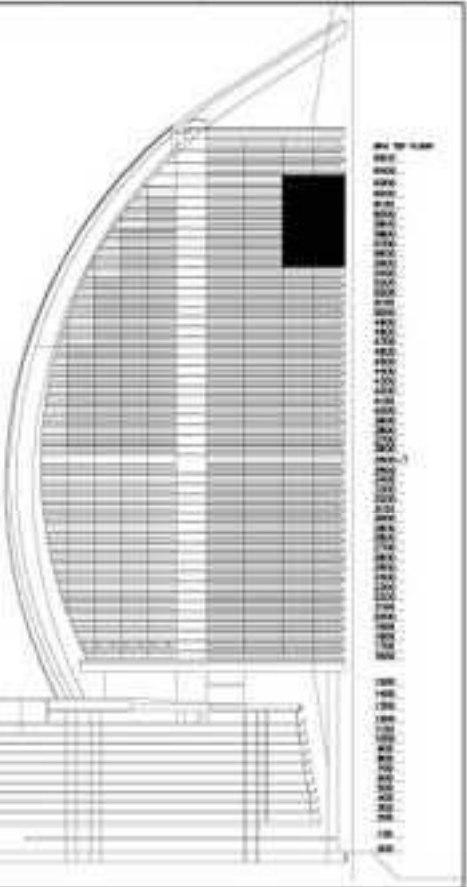
ESQUEMA PRELIMINAR



# Brennto PH - 3 BED ROOM COMBO

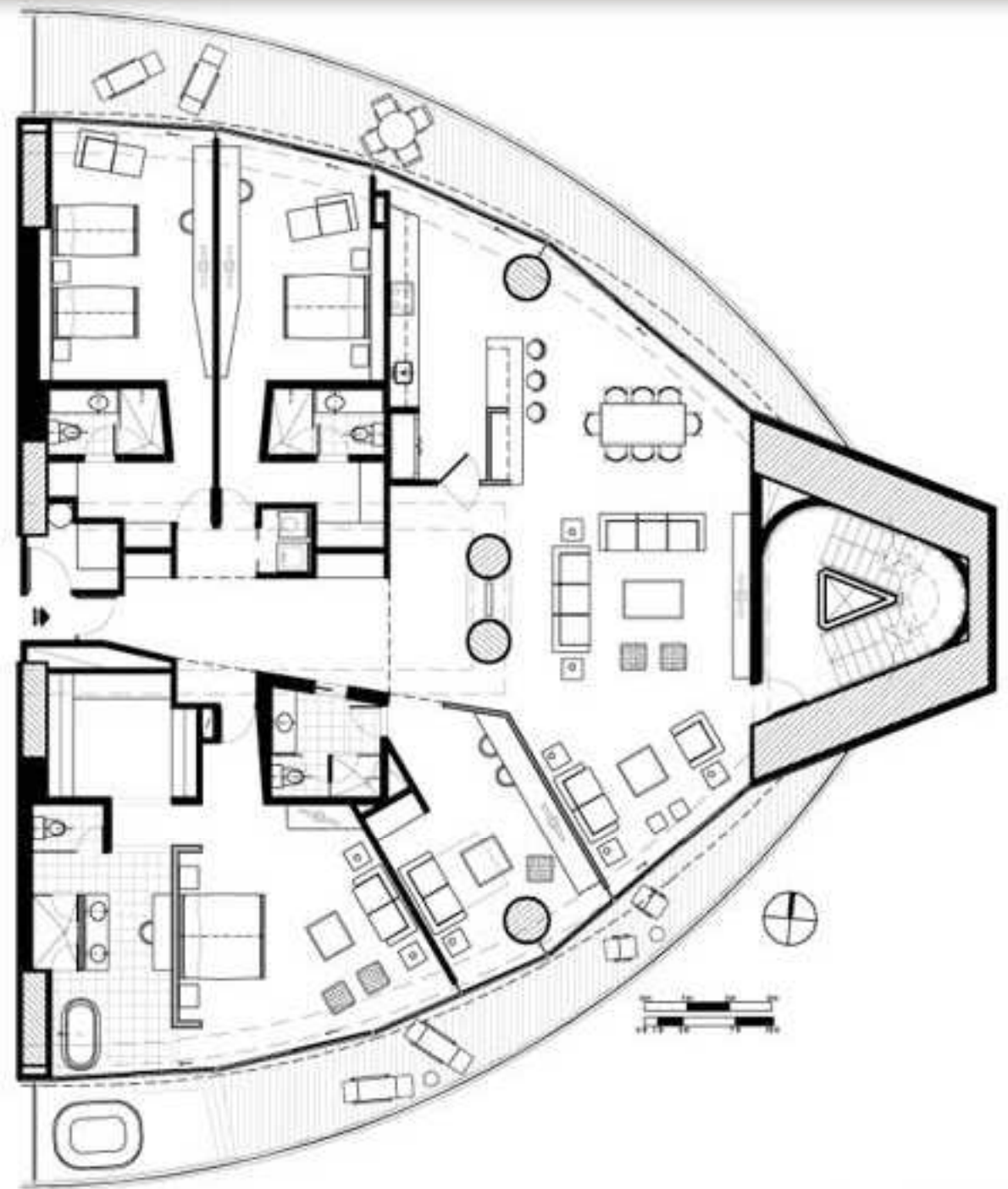


CALIZACION



CALIZACION CORTE

MP OCEAN CLUB



ESQUEMA PRELIMINAR



# Bay Loft Floor Plans



# Residential Suite Standard



STANDARD



TRUMP OCEAN CLUB PANAMA

FLOOR PLAN 400 - STUDIO RESIDENTIAL SUITE STANDARD



ADIAS

# Residential Suite Standard



**TRUMP OCEAN CLUB PANAMA**  
FLOOR PLAN 900 - ONE BEDROOM RESIDENTIAL SUITE STANDARD



# Residential Suite Corner





# Residential Suite Corner



CORNER



